
 US Army Corps of Engineers
 Jacksonville District
 SAFETY ON THIS JOB
 DEPENDS ON YOU

| | |
|--------------|------------------|
| Designed by: | WRM |
| Checked by: | GHR |
| Drawn by: | WRM |
| File No.: | WR1255A-000-0000 |
| Date: | AUG 2020 |

DEPARTMENT OF THE ARMY
 JACKSONVILLE DISTRICT, CORPS OF ENGINEERS
 JACKSONVILLE, FLORIDA

SAN JUAN HARBOR
 SAN JUAN, PUERTO RICO
**HYDROGRAPHIC EXAM SURVEY FY20
 30 THRU 56-FOOT PROJECT**
 STA. 11+24.57 THRU STA. 35+00 SAN ANTONIO APPROACH CHANNEL
PLAN

Scale: AS SHOWN
 Drawing no.
13
 SHEET 13 OF 17

| MAP LABEL | AIDS TO NAVIGATION | PLANE COORDINATES | | LATITUDE | LONGITUDE |
|--------------|---------------------|-------------------|---------|--------------|--------------|
| | | X | Y | | |
| MOORING BUOY | MOORING BUOY (0920) | 766.556 | 884.512 | 18°27'42.85" | 66°06'53.25" |

GRAPHIC SCALE
 100' 0 100' 200'
 NOTES:
 1. REFER TO SURVEY NO. 20-137.
 2. SEE SHEET NO. 1 FOR SURVEY NOTES.

MATCHLINE SHEET NO. 004 RGE. 2100 (ANEGADO CHANNEL)

MATCHLINE SHEET NO. 014 STA. 36+00 (ANEGADO CHANNEL)

CRUISE SHIP BASIN WEST

CRUISE SHIP BASIN W

U.S.C.G. STA. SAN JUAN

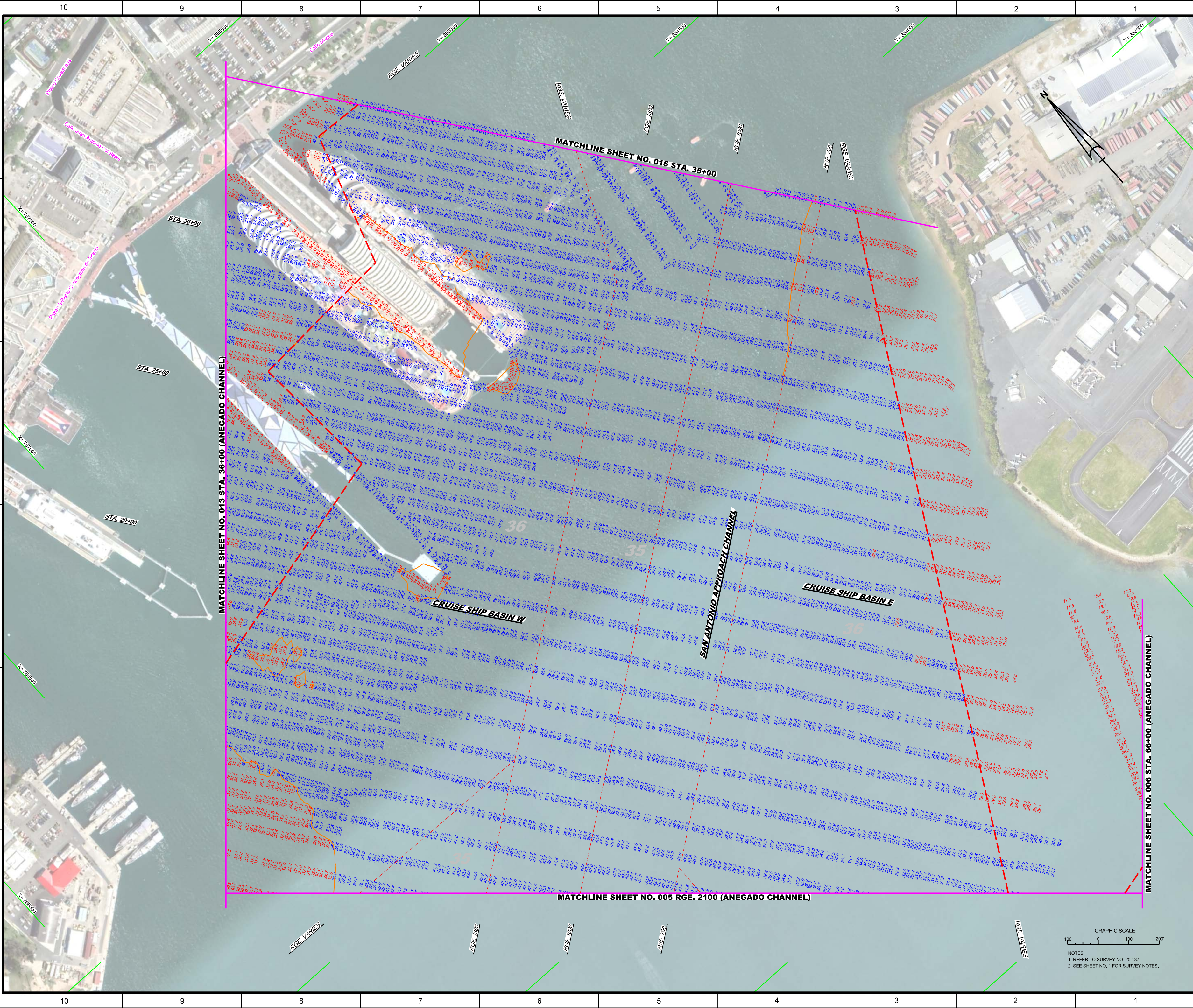
MOORING BUOY

STA. 30+00

X= 88500

10 9 8 7 6 5 4 3 2 1

F
E
D
C
B
A



| | |
|---|-----------------------------|
| <p>US Army Corps of Engineers Jacksonville District</p> | |
| <p>SAFETY ON THIS JOB DEPENDS ON YOU</p> | |
| <p>Checked By: GHR</p> | <p>Drawn By: WRM</p> |
| <p>Designed By: WRM</p> | <p>Checked: AUG 2020</p> |
| <p>20-137A-CON-05.DGN</p> | <p>20-137A-CON-05.DGN</p> |
| <p>20-137A-SOUL-03.DGN</p> | <p>20-137A-SOUL-03.DGN</p> |
| <p>20-137A-SOUL-04.DGN</p> | <p>20-137A-SOUL-04.DGN</p> |
| <p>20-137A-SOUL-05.DGN</p> | <p>20-137A-SOUL-05.DGN</p> |
| <p>20-137A-SOUL-06.DGN</p> | <p>20-137A-SOUL-06.DGN</p> |
| <p>20-137A-SOUL-07.DGN</p> | <p>20-137A-SOUL-07.DGN</p> |
| <p>20-137A-SOUL-08.DGN</p> | <p>20-137A-SOUL-08.DGN</p> |
| <p>20-137A-SOUL-09.DGN</p> | <p>20-137A-SOUL-09.DGN</p> |
| <p>20-137A-SOUL-10.DGN</p> | <p>20-137A-SOUL-10.DGN</p> |
| <p>20-137A-SOUL-11.DGN</p> | <p>20-137A-SOUL-11.DGN</p> |
| <p>20-137A-SOUL-12.DGN</p> | <p>20-137A-SOUL-12.DGN</p> |
| <p>20-137A-SOUL-13.DGN</p> | <p>20-137A-SOUL-13.DGN</p> |
| <p>20-137A-SOUL-14.DGN</p> | <p>20-137A-SOUL-14.DGN</p> |
| <p>20-137A-SOUL-15.DGN</p> | <p>20-137A-SOUL-15.DGN</p> |
| <p>20-137A-SOUL-16.DGN</p> | <p>20-137A-SOUL-16.DGN</p> |
| <p>20-137A-SOUL-17.DGN</p> | <p>20-137A-SOUL-17.DGN</p> |
| <p>20-137A-SOUL-18.DGN</p> | <p>20-137A-SOUL-18.DGN</p> |
| <p>20-137A-SOUL-19.DGN</p> | <p>20-137A-SOUL-19.DGN</p> |
| <p>20-137A-SOUL-20.DGN</p> | <p>20-137A-SOUL-20.DGN</p> |
| <p>20-137A-SOUL-21.DGN</p> | <p>20-137A-SOUL-21.DGN</p> |
| <p>20-137A-SOUL-22.DGN</p> | <p>20-137A-SOUL-22.DGN</p> |
| <p>20-137A-SOUL-23.DGN</p> | <p>20-137A-SOUL-23.DGN</p> |
| <p>20-137A-SOUL-24.DGN</p> | <p>20-137A-SOUL-24.DGN</p> |
| <p>20-137A-SOUL-25.DGN</p> | <p>20-137A-SOUL-25.DGN</p> |
| <p>20-137A-SOUL-26.DGN</p> | <p>20-137A-SOUL-26.DGN</p> |
| <p>20-137A-SOUL-27.DGN</p> | <p>20-137A-SOUL-27.DGN</p> |
| <p>20-137A-SOUL-28.DGN</p> | <p>20-137A-SOUL-28.DGN</p> |
| <p>20-137A-SOUL-29.DGN</p> | <p>20-137A-SOUL-29.DGN</p> |
| <p>20-137A-SOUL-30.DGN</p> | <p>20-137A-SOUL-30.DGN</p> |
| <p>20-137A-SOUL-31.DGN</p> | <p>20-137A-SOUL-31.DGN</p> |
| <p>20-137A-SOUL-32.DGN</p> | <p>20-137A-SOUL-32.DGN</p> |
| <p>20-137A-SOUL-33.DGN</p> | <p>20-137A-SOUL-33.DGN</p> |
| <p>20-137A-SOUL-34.DGN</p> | <p>20-137A-SOUL-34.DGN</p> |
| <p>20-137A-SOUL-35.DGN</p> | <p>20-137A-SOUL-35.DGN</p> |
| <p>20-137A-SOUL-36.DGN</p> | <p>20-137A-SOUL-36.DGN</p> |
| <p>20-137A-SOUL-37.DGN</p> | <p>20-137A-SOUL-37.DGN</p> |
| <p>20-137A-SOUL-38.DGN</p> | <p>20-137A-SOUL-38.DGN</p> |
| <p>20-137A-SOUL-39.DGN</p> | <p>20-137A-SOUL-39.DGN</p> |
| <p>20-137A-SOUL-40.DGN</p> | <p>20-137A-SOUL-40.DGN</p> |
| <p>20-137A-SOUL-41.DGN</p> | <p>20-137A-SOUL-41.DGN</p> |
| <p>20-137A-SOUL-42.DGN</p> | <p>20-137A-SOUL-42.DGN</p> |
| <p>20-137A-SOUL-43.DGN</p> | <p>20-137A-SOUL-43.DGN</p> |
| <p>20-137A-SOUL-44.DGN</p> | <p>20-137A-SOUL-44.DGN</p> |
| <p>20-137A-SOUL-45.DGN</p> | <p>20-137A-SOUL-45.DGN</p> |
| <p>20-137A-SOUL-46.DGN</p> | <p>20-137A-SOUL-46.DGN</p> |
| <p>20-137A-SOUL-47.DGN</p> | <p>20-137A-SOUL-47.DGN</p> |
| <p>20-137A-SOUL-48.DGN</p> | <p>20-137A-SOUL-48.DGN</p> |
| <p>20-137A-SOUL-49.DGN</p> | <p>20-137A-SOUL-49.DGN</p> |
| <p>20-137A-SOUL-50.DGN</p> | <p>20-137A-SOUL-50.DGN</p> |
| <p>20-137A-SOUL-51.DGN</p> | <p>20-137A-SOUL-51.DGN</p> |
| <p>20-137A-SOUL-52.DGN</p> | <p>20-137A-SOUL-52.DGN</p> |
| <p>20-137A-SOUL-53.DGN</p> | <p>20-137A-SOUL-53.DGN</p> |
| <p>20-137A-SOUL-54.DGN</p> | <p>20-137A-SOUL-54.DGN</p> |
| <p>20-137A-SOUL-55.DGN</p> | <p>20-137A-SOUL-55.DGN</p> |
| <p>20-137A-SOUL-56.DGN</p> | <p>20-137A-SOUL-56.DGN</p> |
| <p>20-137A-SOUL-57.DGN</p> | <p>20-137A-SOUL-57.DGN</p> |
| <p>20-137A-SOUL-58.DGN</p> | <p>20-137A-SOUL-58.DGN</p> |
| <p>20-137A-SOUL-59.DGN</p> | <p>20-137A-SOUL-59.DGN</p> |
| <p>20-137A-SOUL-60.DGN</p> | <p>20-137A-SOUL-60.DGN</p> |
| <p>20-137A-SOUL-61.DGN</p> | <p>20-137A-SOUL-61.DGN</p> |
| <p>20-137A-SOUL-62.DGN</p> | <p>20-137A-SOUL-62.DGN</p> |
| <p>20-137A-SOUL-63.DGN</p> | <p>20-137A-SOUL-63.DGN</p> |
| <p>20-137A-SOUL-64.DGN</p> | <p>20-137A-SOUL-64.DGN</p> |
| <p>20-137A-SOUL-65.DGN</p> | <p>20-137A-SOUL-65.DGN</p> |
| <p>20-137A-SOUL-66.DGN</p> | <p>20-137A-SOUL-66.DGN</p> |
| <p>20-137A-SOUL-67.DGN</p> | <p>20-137A-SOUL-67.DGN</p> |
| <p>20-137A-SOUL-68.DGN</p> | <p>20-137A-SOUL-68.DGN</p> |
| <p>20-137A-SOUL-69.DGN</p> | <p>20-137A-SOUL-69.DGN</p> |
| <p>20-137A-SOUL-70.DGN</p> | <p>20-137A-SOUL-70.DGN</p> |
| <p>20-137A-SOUL-71.DGN</p> | <p>20-137A-SOUL-71.DGN</p> |
| <p>20-137A-SOUL-72.DGN</p> | <p>20-137A-SOUL-72.DGN</p> |
| <p>20-137A-SOUL-73.DGN</p> | <p>20-137A-SOUL-73.DGN</p> |
| <p>20-137A-SOUL-74.DGN</p> | <p>20-137A-SOUL-74.DGN</p> |
| <p>20-137A-SOUL-75.DGN</p> | <p>20-137A-SOUL-75.DGN</p> |
| <p>20-137A-SOUL-76.DGN</p> | <p>20-137A-SOUL-76.DGN</p> |
| <p>20-137A-SOUL-77.DGN</p> | <p>20-137A-SOUL-77.DGN</p> |
| <p>20-137A-SOUL-78.DGN</p> | <p>20-137A-SOUL-78.DGN</p> |
| <p>20-137A-SOUL-79.DGN</p> | <p>20-137A-SOUL-79.DGN</p> |
| <p>20-137A-SOUL-80.DGN</p> | <p>20-137A-SOUL-80.DGN</p> |
| <p>20-137A-SOUL-81.DGN</p> | <p>20-137A-SOUL-81.DGN</p> |
| <p>20-137A-SOUL-82.DGN</p> | <p>20-137A-SOUL-82.DGN</p> |
| <p>20-137A-SOUL-83.DGN</p> | <p>20-137A-SOUL-83.DGN</p> |
| <p>20-137A-SOUL-84.DGN</p> | <p>20-137A-SOUL-84.DGN</p> |
| <p>20-137A-SOUL-85.DGN</p> | <p>20-137A-SOUL-85.DGN</p> |
| <p>20-137A-SOUL-86.DGN</p> | <p>20-137A-SOUL-86.DGN</p> |
| <p>20-137A-SOUL-87.DGN</p> | <p>20-137A-SOUL-87.DGN</p> |
| <p>20-137A-SOUL-88.DGN</p> | <p>20-137A-SOUL-88.DGN</p> |
| <p>20-137A-SOUL-89.DGN</p> | <p>20-137A-SOUL-89.DGN</p> |
| <p>20-137A-SOUL-90.DGN</p> | <p>20-137A-SOUL-90.DGN</p> |
| <p>20-137A-SOUL-91.DGN</p> | <p>20-137A-SOUL-91.DGN</p> |
| <p>20-137A-SOUL-92.DGN</p> | <p>20-137A-SOUL-92.DGN</p> |
| <p>20-137A-SOUL-93.DGN</p> | <p>20-137A-SOUL-93.DGN</p> |
| <p>20-137A-SOUL-94.DGN</p> | <p>20-137A-SOUL-94.DGN</p> |
| <p>20-137A-SOUL-95.DGN</p> | <p>20-137A-SOUL-95.DGN</p> |
| <p>20-137A-SOUL-96.DGN</p> | <p>20-137A-SOUL-96.DGN</p> |
| <p>20-137A-SOUL-97.DGN</p> | <p>20-137A-SOUL-97.DGN</p> |
| <p>20-137A-SOUL-98.DGN</p> | <p>20-137A-SOUL-98.DGN</p> |
| <p>20-137A-SOUL-99.DGN</p> | <p>20-137A-SOUL-99.DGN</p> |
| <p>20-137A-SOUL-100.DGN</p> | <p>20-137A-SOUL-100.DGN</p> |

GRAPHIC SCALE
100' 0 100' 200'

NOTES:
1. REFER TO SURVEY NO. 20-137.
2. SEE SHEET NO. 1 FOR SURVEY NOTES.

Scale: AS SHOWN

Drawing no. **14**

SHEET 14 OF 17

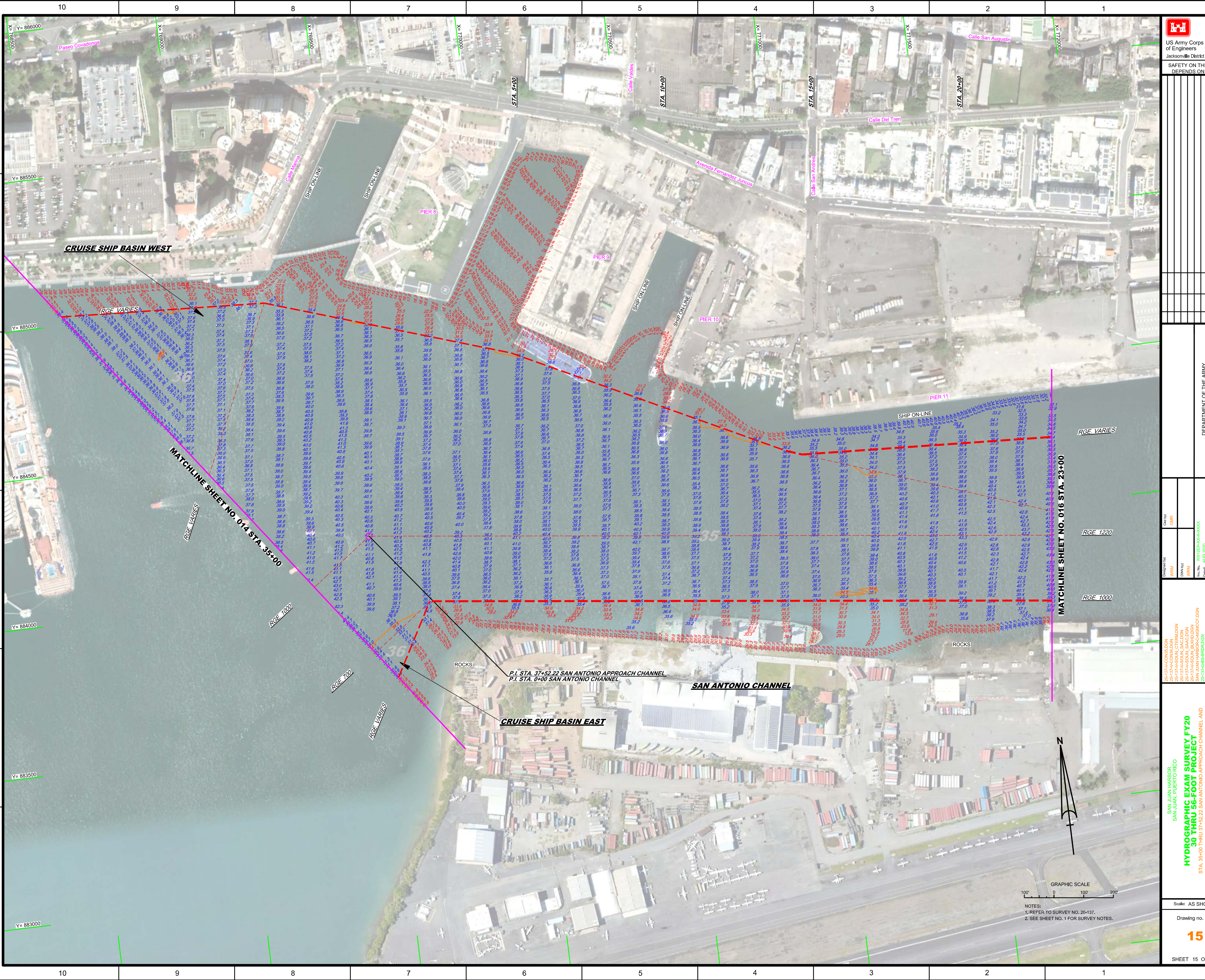
DEPARTMENT OF THE ARMY
JACKSONVILLE DISTRICT, CORPS OF ENGINEERS
JACKSONVILLE, FLORIDA

SAN JUAN HARBOR
SAN JUAN, PUERTO RICO

**HYDROGRAPHIC EXAM SURVEY FY20
30 THRU 56-FOOT PROJECT**

STA. 11+24.57 THRU STA. 35+00 SAN ANTONIO APPROACH CHANNEL

PLAN



US Army Corps of Engineers
 Jacksonville District
 SAFETY ON THIS JOB
 DEPENDS ON YOU

DEPARTMENT OF THE ARMY
 JACKSONVILLE DISTRICT CORPS OF ENGINEERS
 JACKSONVILLE, FLORIDA

Checked By: GHR
 Designed By: WRM
 Drawn By: WRM
 File No: W12556-00-0004
 Date: AUG 2020

Reference Files:
 20-137A-COONB.DGN
 20-137A-COONL.DGN
 20-137A-COONM.DGN
 20-137A-COONR.DGN
 20-137A-COONW.DGN
 20-137A-SDIA_SAM.DGN
 20-137A-SDIA_SAM.DGN
 20-137A-SDIA_SAM.DGN
 20-137A-SDIA_SAM.DGN
 20-137A-SDIA_SAM.DGN
 20-137A-SDIA_SAM.DGN

PLAN

HYDROGRAPHIC EXAM SURVEY FY20
30 THRU 56-FOOT PROJECT
 STA. 0+00 THRU STA. 23+00 SAN ANTONIO CHANNEL AND
 STA. 35+00 THRU STA. 37+52.22 SAN ANTONIO APPROACH CHANNEL

Scale: AS SHOWN
 Drawing no. **15**
 SHEET 15 OF 17

GRAPHIC SCALE
 100' 0 100' 200'

NOTES:
 1. REFER TO SURVEY NO. 20-137.
 2. SEE SHEET NO. 1 FOR SURVEY NOTES.



| | |
|--|------------------------|
| <p>US Army Corps of Engineers Jacksonville District</p> | |
| <p>SAFETY ON THIS JOB DEPENDS ON YOU</p> | |
| <p>DESIGNED BY: WRM</p> | <p>CHECKED BY: GHR</p> |
| <p>DRAWN BY: WRM</p> | <p>DATE: AUG 2020</p> |
| <p>PROJECT: SAN JUAN MARINA SAN JUAN, PUERTO RICO</p> | |
| <p>HYDROGRAPHIC EXAM SURVEY FY20 30 THRU 56-FOOT PROJECT</p> | |
| <p>EXTENSION OF SAN ANTONIO CHANNEL TO SAN JUAN MARINA</p> | |
| <p>PLAN</p> | |
| <p>Scale: AS SHOWN</p> | |
| <p>Drawing no. 17</p> | |
| <p>SHEET 17 OF 17</p> | |